

Berger Realty

Since 1928

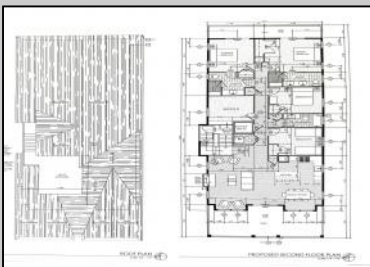
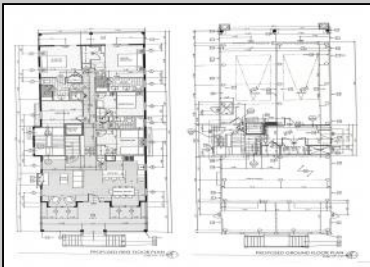


Berger Realty, Inc
1330 Bay Avenue
Ocean City, NJ 08226
609-391-1330/609-391-1300
info@bergerrealty.com



5533-35 Simpson
Ocean City, NJ 08226

Asking \$3,190,000.00



COMMENTS

This fantastic new construction project by Whale Beach Builders is located in the quiet south end of Ocean City. This is your chance to own an entire duplex with 5 bedrooms on each floor, 3 baths on the first floor, and 3.5 baths on the second floor. This duplex property will offer all the top end amenities you'd expect from this premier builder, such as Cortex flooring, a beautiful kitchen featuring stainless steel appliances, granite counters, and tile baths, all on a big 40 x 115 ft. lot. Don't worry about the stairs to the 2nd floor unit - you'll have an elevator from the garage directly to your home, and a roof top deck to enjoy those starry summer nights. Just three blocks from the beach, and within biking or walking distance to Corson's Inlet State Park, you'll have convenient access to all the south end restaurants, ice cream, mini golf and playgrounds. Hop on the jitney for a trip to the boardwalk or downtown Asbury Ave. First floor is available separately for \$1,495,000. Second floor is available separately for \$1,695,000.

PROPERTY DETAILS

OutsideFeatures	ParkingGarage	OtherRooms	Basement
Deck	Garage	Living Room	Crawl Space
Sidewalks	Attached	Dining Room	
Outside Shower	Concrete Driveway	Laundry/Utility Room	
		Great Room	
Heating	Cooling	HotWater	Water
	Central Air	Gas	Public



Call for Joanne Kelly

Berger Realty Inc
1330 Bay Avenue, Ocean City
Call: 609-391-1330
Email to: jmk@bergerrealty.com

