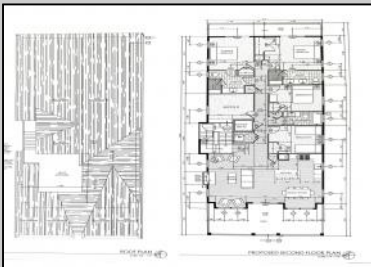
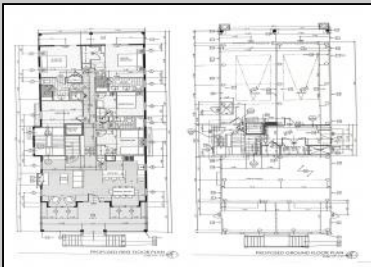




5535 Simpson
Ocean City, NJ 08226

Asking \$1,695,000.00



SIMPSON AVENUE (FRONT) ELEVATION

COMMENTS

This fantastic new construction project is located in the quiet south end of Ocean City. The second floor unit with 5 bedrooms and 3.5 baths will offer all the top end amenities you'd expect from this premier builder, such as Cortex flooring, a beautiful kitchen featuring stainless steel appliances, granite counter, and tile baths. All of this on a large 40' x 115' lot. Don't worry about the stairs - you'll have an elevator from the garage directly to your second floor home, and a rooftop deck to enjoy those starry summer nights. Just three blocks from the beach and within biking or walking distance to Corson's Inlet State Park, you'll have convenient access to all the south end restaurants, ice cream, mini golf and playgrounds. Hop on the jitney for a trip to the boardwalk or downtown Asbury Ave.

PROPERTY DETAILS

Unit Features	Parking/Garage	Other Rooms	Appliances Included
Fireplace	Garage	Living Room	Range
Kitchen Island	Parking Pad	Dining Room	Self-Clean Oven
Wall To Wall Carpet	2 Car	Dining Area	Microwave Oven
Elevator	Attached	Laundry/Utility Room	Refrigerator
Cathedral Ceiling	Concrete Driveway	Great Room	Washer
			Dryer
			Dishwasher
			Disposal
			Stainless Steel Appliance



Ask for Linda Watts
Berger Realty Inc
1670 Boardwalk, Ocean City
Call 609-391-0500
Email to: ljw@bergerrealty.com

