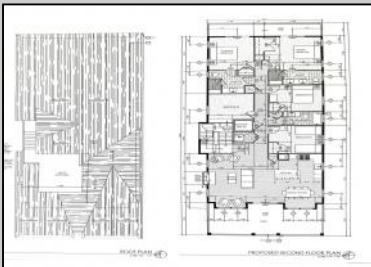




5535 Simpson
 Ocean City, NJ 08226

Asking \$1,695,000.00



COMMENTS

This fantastic new construction project is located in the quiet south end of Ocean City. The second floor unit with 5 bedrooms and 3.5 baths will offer all the top end amenities you'd expect from this premier builder, such as Cortex flooring, a beautiful kitchen featuring stainless steel appliances, granite counter, and tile baths. All of this on a large 40' x 115' lot. Don't worry about the stairs - you'll have an elevator from the garage directly to your second floor home, and a rooftop deck to enjoy those starry summer nights. Just three blocks from the beach and within biking or walking distance to Corson's Inlet State Park, you'll have convenient access to all the south end restaurants, ice cream, mini golf and playgrounds. Hp on the jitney for a trip to the boardwalk or downtown Asbury Ave.

PROPERTY DETAILS

Unit	Features	Parking	Garage	Other Rooms	Appliances	Included
	Fireplace		Garage	Living Room	Range	
	Kitchen Island		Parking Pad	Dining Room	Self-Clean Oven	
	Wall To Wall Carpet		2 Car	Dining Area	Microwave Oven	
	Elevator		Attached	Laundry/Utility Room	Refrigerator	
	Cathedral Ceiling		Concrete Driveway	Great Room	Washer	
					Dryer	
					Dishwasher	
					Disposal	
					Stainless	Steel
					Appliance	



Ask for Denise Kelley
 Berger Realty Inc
 3160 Asbury Avenue, Ocean City
 Call 609-399-0076
 Email to: dlk@bergerrealty.com

