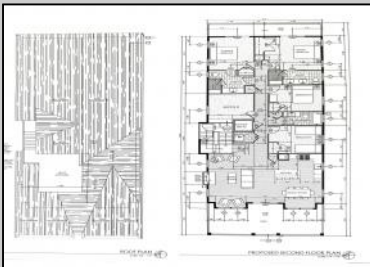
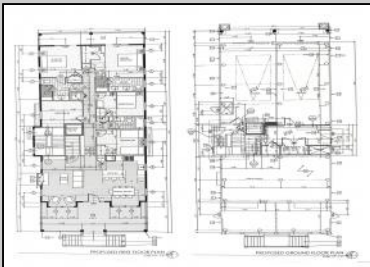




5535 Simpson
 Ocean City, NJ 08226

Asking \$1,695,000.00



SIMPSON AVENUE (FRONT) ELEVATION

COMMENTS

This fantastic new construction project is located in the quiet south end of Ocean City. The second floor unit with 5 bedrooms and 3.5 baths will offer all the top end amenities you'd expect from this premier builder, such as Cortex flooring, a beautiful kitchen featuring stainless steel appliances, granite counter, and tile baths. All of this on a large 40' x 115' lot. Don't worry about the stairs - you'll have an elevator from the garage directly to your second floor home, and a rooftop deck to enjoy those starry summer nights. Just three blocks from the beach and within biking or walking distance to Corson's Inlet State Park, you'll have convenient access to all the south end restaurants, ice cream, mini golf and playgrounds. Hop on the jitney for a trip to the boardwalk or downtown Asbury Ave.

PROPERTY DETAILS

Unit	Features	Parking	Garage	Other	Rooms	Appliances	Included
	Fireplace		Garage		Living Room		Range
	Kitchen Island		Parking Pad		Dining Room		Self-Clean Oven
	Wall To Wall Carpet		2 Car		Dining Area		Microwave Oven
	Elevator		Attached		Laundry/Utility Room		Refrigerator
	Cathedral Ceiling		Concrete Driveway		Great Room		Washer
							Dryer
							Dishwasher
							Disposal
							Stainless
							Appliance
							Steel



Ask for Chris Warren
 Berger Realty Inc
 3160 Asbury Avenue, Ocean City
 Call 609-399-0076
 Email to: caw@bergerrealty.com

