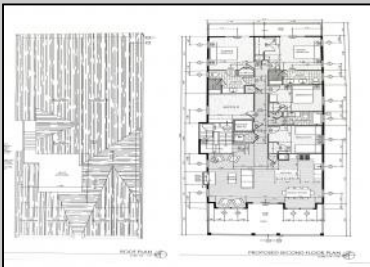
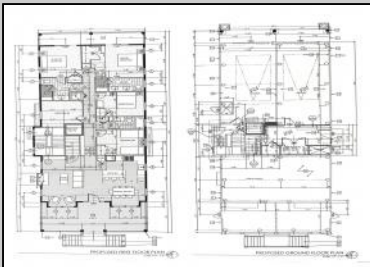




**5533 Simpson
Ocean City, NJ 08226**

Asking \$1,495,000.00



SIMPSON AVENUE (FRONT) ELEVATION

COMMENTS

This fantastic new construction project is located in the quiet south end of Ocean City. The first floor unit with 5 bedrooms and 3 baths will offer all the top end amenities you'd expect from this premier builder, such as Cortex flooring, a beautiful kitchen featuring stainless steel appliances, granite counter, and tile baths. All of this on a large 40' x 115' lot. Just three blocks from the beach and within biking or walking distance to Corson's Inlet State Park, you'll have convenient access to all the south end restaurants, ice cream, mini golf and playgrounds. Hop on the jitney for a trip to the boardwalk or downtown Asbury Ave.

PROPERTY DETAILS

| | | | |
|----------------|-------------------|----------------------|---------------------------|
| Unit Features | Parking Garage | Other Rooms | Appliances Included |
| Fireplace | Garage | Living Room | Range |
| Kitchen Island | Parking Pad | Dining Room | Self-Clean Oven |
| | 2 Car | Dining Area | Microwave Oven |
| | Attached | Laundry/Utility Room | Refrigerator |
| | Concrete Driveway | Great Room | Washer |
| | | | Dryer |
| | | | Dishwasher |
| | | | Disposal |
| | | | Stainless Steel Appliance |
| | | | |
| | | | Water Public |



Ask for John Andrews
Berger Realty Inc.
1670 Boardwalk, Ocean City
Call: 609-391-0500
Email to: ja@bergerrealty.com

