



**3802 Landis**  
**Sea Isle City, NJ 08243**

**Asking \$1,690,000.00**

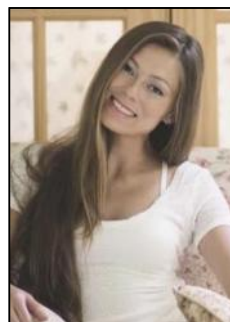


### COMMENTS

ONE OF A KIND UNIQUE PROPERTY !....AFFECTIONATELY KNOWN AS THE TAJ MAHAL THIS CHARMING HOME BUILT IN 1920 HAS SERVED AS A GATHERING PLACE FOR MANY GENERATIONS OF IT'S CURRENT OWNERS FAMILY AND FRIENDS. LISTED WITH SEA ISLE CITY TAX ASSESSOR AS 4 UNITS. CONSISTING OF 14 BEDROOMS 5 BATHS WITH A LARGE FRONT PORCH. NEEDS SOME TLC TO BRING THIS BEAUTY BACK TO ITS ORIGINAL CONDITION! SOLD "AS IS". GREAT RENTAL INVESTMENT POTENTIAL. ALSO, POTENTIAL DEVELOPMENT OPPORTUNITY 60X100 LOT ZONED COMMERCIAL, LOCATED AT THE CORNER OF LANDIS AND 38TH ST. ACROSS FROM WAWA

### PROPERTY DETAILS

Exterior Wood/Frame	ParkingGarage 1 To 5 Spaces Off Street	Heating No Heating	Cooling Ceiling Fan
Water Public	Sewer Public		



Ask for Margarita Kobilianets  
Berger Realty Inc  
1670 Boardwalk, Ocean City  
Call: 609-391-0500  
Email to: [mak@bergerrealty.com](mailto:mak@bergerrealty.com)

