



1441 Delaware
Cape May, NJ 08204

Asking \$1,100,000.00

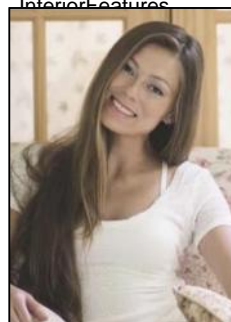


COMMENTS

This beautiful, single family attached home, features an upside-down floor plan. First floor consists of master bedroom w/ ensuite bathroom and walk-in closet, two additional bedrooms, full bath, laundry room, and French doors leading to the private landscaped back yard. The large open living room / dining room on the 2nd floor provides plenty of space for the whole family to gather, and the updated kitchen with granite counter tops and skylights is sure to please. Additional features include an outside shower, expansive second floor deck, attached garage, bonus room, and an elevator. Walking distance to the Fisherman's Memorial, Cape May Nature Center, and views of the harbor. This property will not last long, schedule your private tour today.

PROPERTY DETAILS

Exterior Vinyl	OutsideFeatures Deck Fenced Yard Sidewalks Outside Shower Sprinkler System	ParkingGarage Garage Parking Pad	OtherRooms Living Room Eat-In-Kitchen Dining Area Laundry/Utility Room See Remarks 1st Floor Primary Bedroom
InteriorFeatures	AppliancesIncluded Range Stove Microwave Refrigerator Washer Dryer Dishwasher	AlsoIncluded Partial Furniture Knobless	Basement Crawl Space
	Cooling Central Air Condition	HotWater Gas- Natural	



Call Margarita Kobliants
Berger Realty Inc
1670 Boardwalk, Ocean City
Call: 609-391-0500
Email: mak@bergerrealty.com



Sewer
City