



1402 Route 9 South
Burleigh, NJ 08260

Asking \$109,000.00



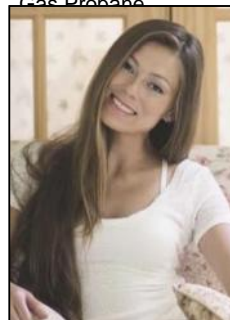
COMMENTS

A rare opportunity to purchase a Large 1-bedroom 1 full bath home in a 55+ community. Lots of closet space for storage, newer carpet & vinyl floors, stackable washer & dryer, central air, 2 car parking pad with a large storage shed Garden Lake Mobile Home Park is a beautiful, manufactured housing community in Cape May County just minutes from the famous Wildwood beaches and approximately 15 minutes to Historic Cape May. Fishing, boating, canoeing & paddle boarding are a few activities to enjoy on the lake. Great year-round home or your retreat at the Jersey Shore. Current lot rent is \$580 a month includes taxes, water, sewer and snow removal. New owners must submit an application for park approval. Easy to show. Pets allowed with some restrictions on dogs.

PROPERTY DETAILS

Exterior	OutsideFeatures	ParkingGarage	OtherRooms
Vinyl	Enclosed/Covered	2 Car	Living Room
	Patio	Concrete Driveway	Eat-In-Kitchen
	Storage Building		1st Floor Primary Bedroom
			Laundry Closet

Heating	Cooling	HotWater	Water
Gas Propane	Central Air Condition	Electric	City
	Ceiling Fan		



Ask for Margarita Kobilianets
Berger Realty Inc
1670 Boardwalk, Ocean City
Call: 609-391-0500
Email to: mak@bergerrealty.com

