



2133 Route 47  
Eldora, NJ 08270

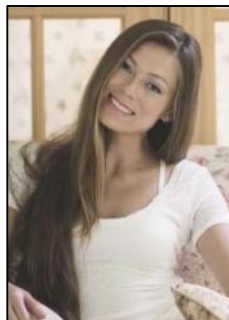
Asking \$129,900.00



#### COMMENTS

1.85 acre partially cleared lot with a new well and an expansive detached garage (approximate size 32' X 22') with electric, ideal for use as a workshop and storage space. There is also a 2-story house structure on the property.

#### PROPERTY DETAILS



Ask for Margarita Kobilianets  
Berger Realty Inc  
1670 Boardwalk, Ocean City  
Call: 609-391-0500  
Email to: [mak@bergerrealty.com](mailto:mak@bergerrealty.com)

