



Rt. 50  
Petersburg, NJ 08270

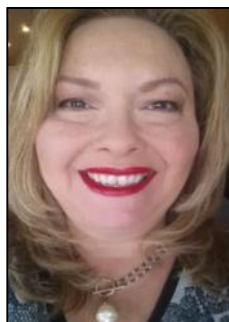
Asking \$599,900.00



### COMMENTS

Unlock a rare opportunity with this pristine 20.04-acre parcel of land nestled in desirable Upper Township, NJ. Just a short 15-minute drive to the beaches of Sea Isle City and Ocean City, this property offers the perfect balance of tranquility and convenience. Accessible via a private drive into a flag lot, this unique parcel boasts the potential for subdivision, allowing for up to 5 lots, each spanning approximately 3.75 acres. Whether you're dreaming of crafting your private sanctuary or seeking an investment opportunity, this property presents endless possibilities. Situated in a serene wooded area near Amanda's Field, this prime parcel is adjacent to Sunset Acres and enjoys close proximity to Upper Township community fields. A recent survey, including wetlands assessment, is available, providing valuable insight for your development plans. Don't miss out on the chance to seize this rare gem and bring your vision to life in Upper Township's coveted landscape.

### PROPERTY DETAILS



Ask for Theresa Maina  
Berger Realty Inc  
3160 Asbury Avenue, Ocean City  
Call: 609-399-0076  
Email to: tam@bergerrealty.com

