



9 Sea Trail Cold Spring, NJ 08204

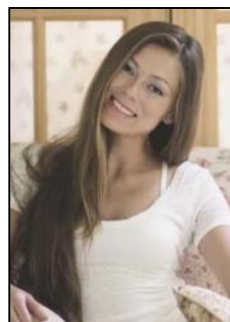
Asking \$1,425,000.00



COMMENTS

Rare opportunity for an amazing building lot in a coveted location nestled in between Cape May City and Cape May Point! With almost 74,000 sqft, this lot is the largest in the development and is located at the end of the cul-de-sac adjacent the walking path, leading to the beach. This 10 lot subdivision is located along the 200 acre South Cape May Meadows preserve, a haven for native and migratory birds. The property to the west is also a designated open space preserve. Build your forever house mere minutes from the action but tucked away in a private location. See Associated docs., for Association Covenants, Restrictions and Easement.

PROPERTY DETAILS



Ask for Margarita Kobilianets
Berger Realty Inc
1670 Boardwalk, Ocean City
Call: 609-391-0500
Email to: mak@bergerrealty.com

