

Berger Realty

Since 1928

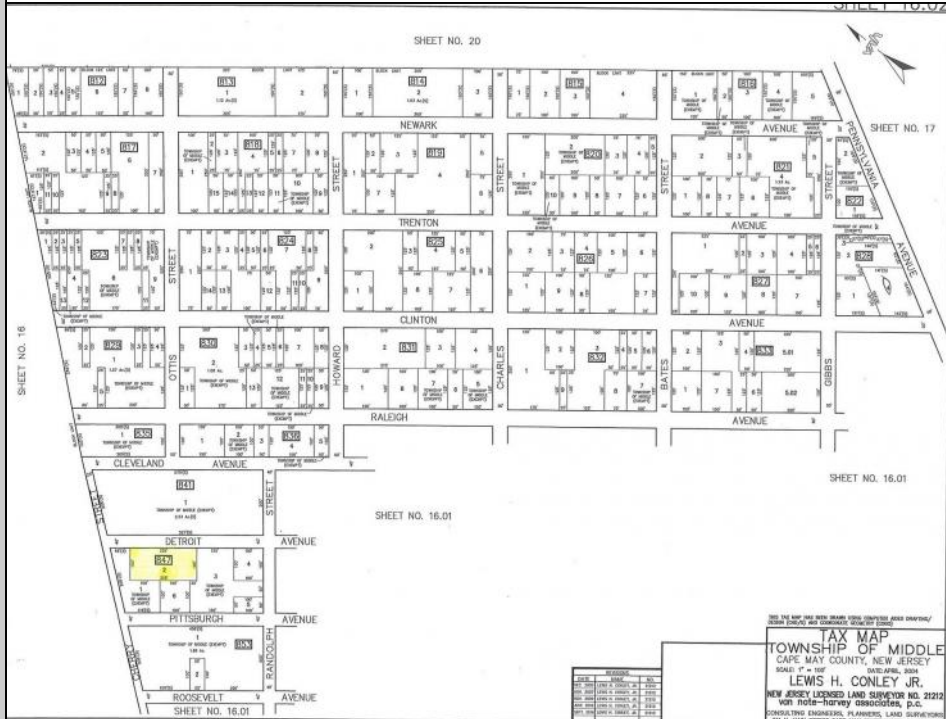


Berger Realty, Inc
 1330 Bay Avenue
 Ocean City, NJ 08226
 609-391-1330/609-391-1300
 info@bergerrealty.com



Detroit
Whitesboro, NJ 08210

Asking \$10,999.00



COMMENTS

Large residential lot on paper street Detroit Avenue (approximately 225X100), near Cherry Street. All permits, applications and approvals are at the buyer's expense. This lot is being sold in it's \"as is, where is\" condition.

PROPERTY DETAILS



Ask for Ludwik Samselski
 Berger Realty Inc
 1330 Bay Avenue, Ocean City
 Call: 609-391-1330
 Email to: ls@bergerrealty.com

