



**5499 Dune  
Avalon, NJ 08202**

**Asking \$24,999,000.00**



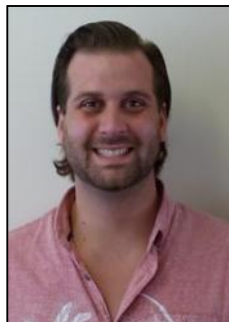
**COMMENTS**

EXCEPTIONAL ELEVATION, PEERLESS PRIVACY - Take advantage of this once-in-a-lifetime opportunity to watch the sun rise over the Atlantic and set on Great Sound from the privacy of your seashore retreat. Located on a massive 27,702 sq. ft. lot in the exclusive High Dunes section of Avalon, this stunning 7,240-sq. ft. Malibu-style home commands perhaps the island's highest elevation, and offers unobstructed 360-degree views from its wrap-around 3rd-floor deck as well as complete privacy in an unspoiled maritime forest setting. Designed by architect Mark Asher, who is known for timeless details, fine craftsmanship and elegant simplicity, and meticulously constructed by Joseph Popper and designed by Fury interiors the home features six bedrooms, each with en suite bath; an elevator, multiple decks with ocean views; a gym, sauna, lap pool and soaking pool—and an enviable lifestyle.

**PROPERTY DETAILS**

OutsideFeatures	ParkingGarage	OtherRooms	InteriorFeatures
Patio	Garage	Living Room	Elevator
Deck	2 Car	Kitchen	Fireplace- Gas
Outside Shower	Attached	Recreation/Family	Wood Flooring
In Ground Pool		Dining Area	Sauna
		Pantry	Tile Flooring
		Laundry/Utility Room	Kitchen Island

Heating Gas  
Cooling Central Air Condition  
HotWater Gas- Natural  
Asking \$24,999,000.00  
Multi Zoned  
Berger Realty Inc  
1670 Boardwalk, Ocean City  
Call: 609-391-0500  
Email to: [ceh@bergerrealty.com](mailto:ceh@bergerrealty.com)



water City  
Sewer City