

# Berger Realty

Since 1928

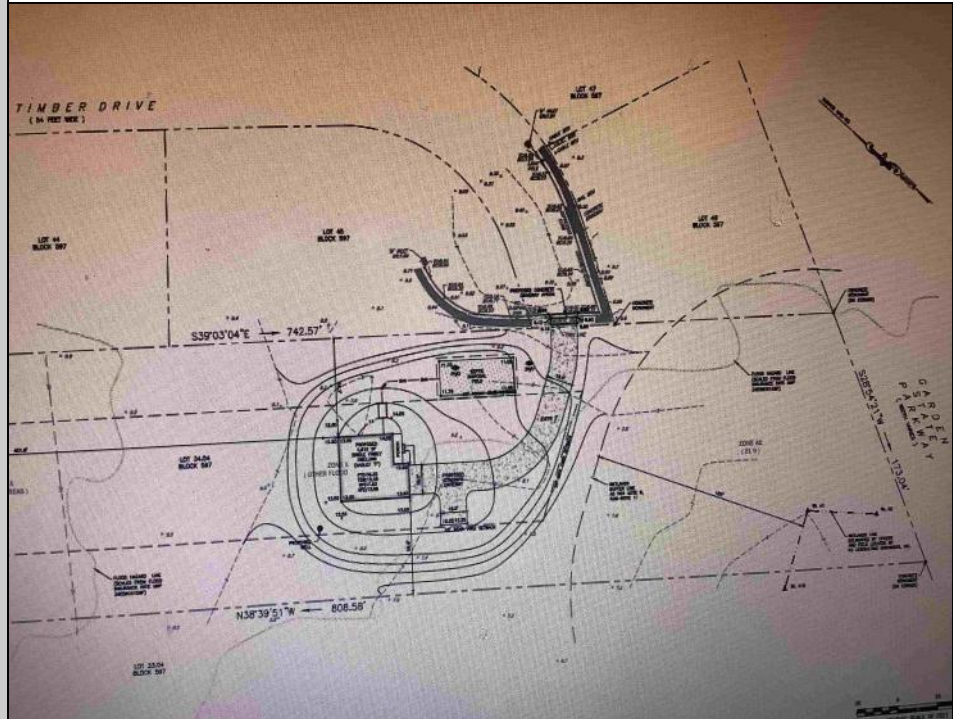


Berger Realty, Inc.  
3160 Asbury Avenue  
Ocean City, NJ 08226  
1-877-237-4371 / 609-399-0076  
info@bergerrealty.com



24 Timber  
Palermo, NJ 08230

Asking \$269,900.00



### COMMENTS

Secluded Buildable wooded lot on a cul de sac off by itself but close to everything. 2.81 Acres part of a 4 lot sub division. Buyer is responsible for all permits, perk tests and engineer to be able to construct a single family home.

### PROPERTY DETAILS



Ask for Nicole Williams  
Berger Realty Inc  
3160 Asbury Avenue, Ocean City  
Call: 609-399-0076  
Email to: ncw@bergerrealty.com

