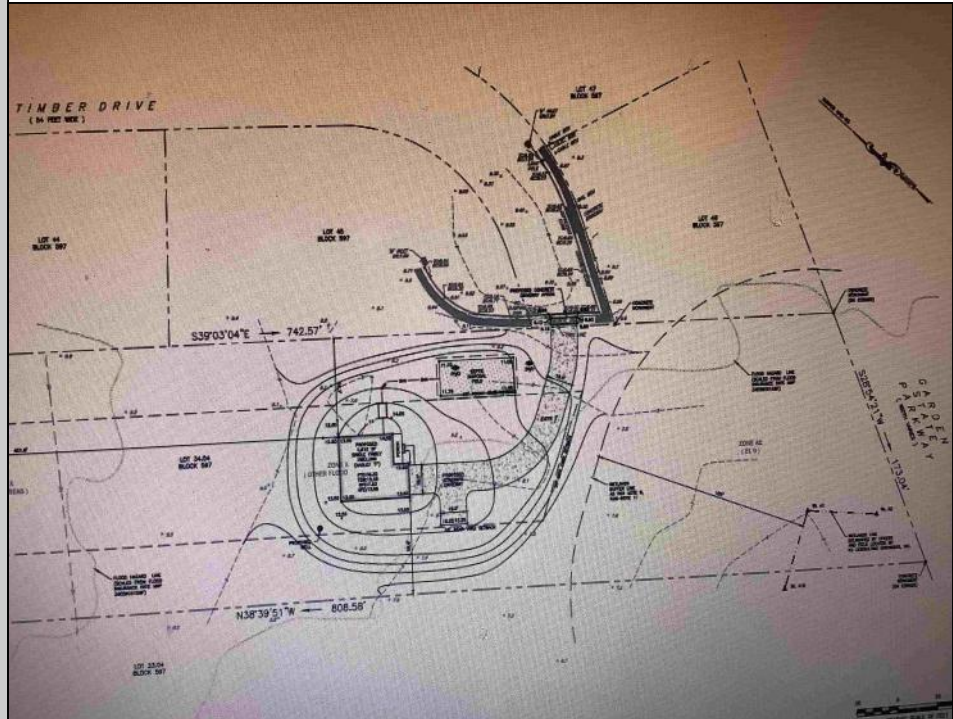




24 Timber
Palermo, NJ 08230

Asking \$269,900.00



COMMENTS

Secluded Buildable wooded lot on a cul de sac off by itself but close to everything. 2.81 Acres part of a 4 lot sub division. Buyer is responsible for all permits, perk tests and engineer to be able to construct a single family home.

PROPERTY DETAILS



Ask for Grant Halliday
Berger Realty Inc
1670 Boardwalk, Ocean City
Call: 609-391-0500
Email to: geh@bergerrealty.com

