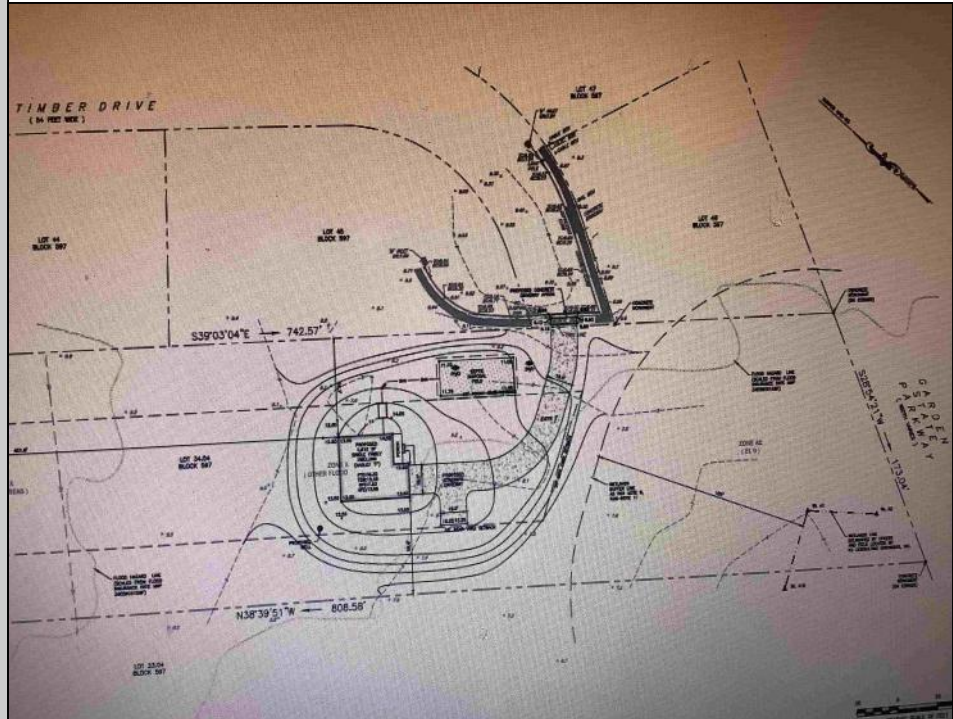




24 Timber
Palermo, NJ 08230

Asking \$269,900.00



COMMENTS

Secluded Buildable wooded lot on a cul de sac off by itself but close to everything. 2.81 Acres part of a 4 lot sub division. Buyer is responsible for all permits, perk tests and engineer to be able to construct a single family home.

PROPERTY DETAILS



Ask for Duane Jarvis
Berger Realty Inc
109 E 55th St., Ocean City
Call: 609-399-4211
Email to: dej@bergerrealty.com

