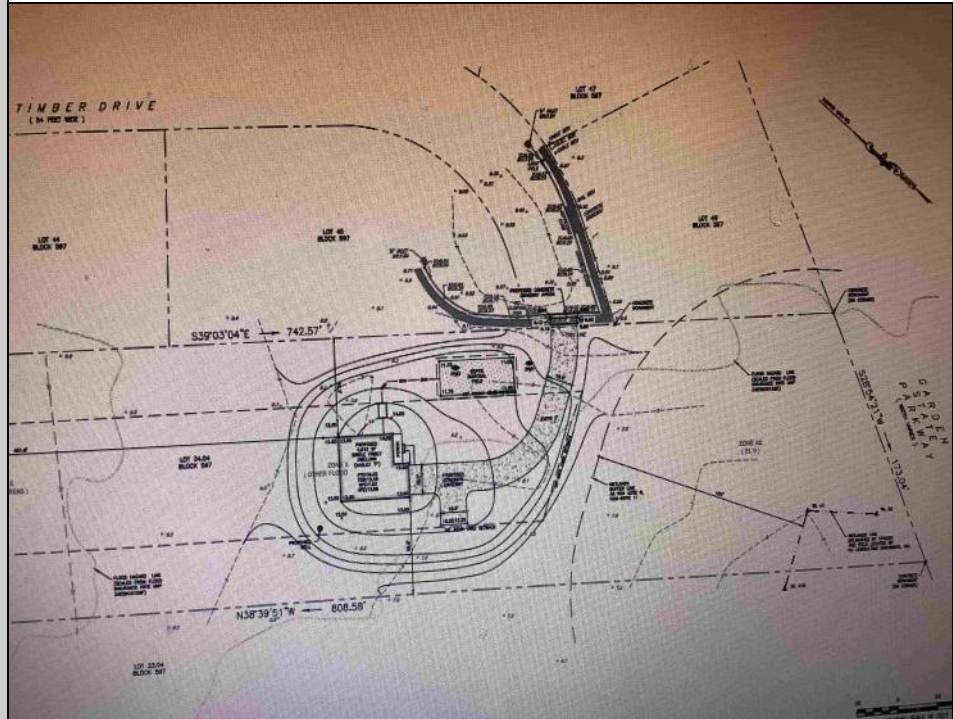




24 Timber  
Palermo, NJ 08230

Asking \$269,900.00



### COMMENTS

Secluded Buildable wooded lot on a cul de sac off by itself but close to everything. 2.81 Acres part of a 4 lot sub division. Buyer is responsible for all permits, perk tests and engineer to be able to construct a single family home.

### PROPERTY DETAILS



Ask for Christopher Malinowski  
Berger Realty Inc  
1670 Boardwalk, Ocean City  
Call: 609-391-0500  
Email to: [cma@bergerrealty.com](mailto:cma@bergerrealty.com)

