

Berger Realty

Since 1928

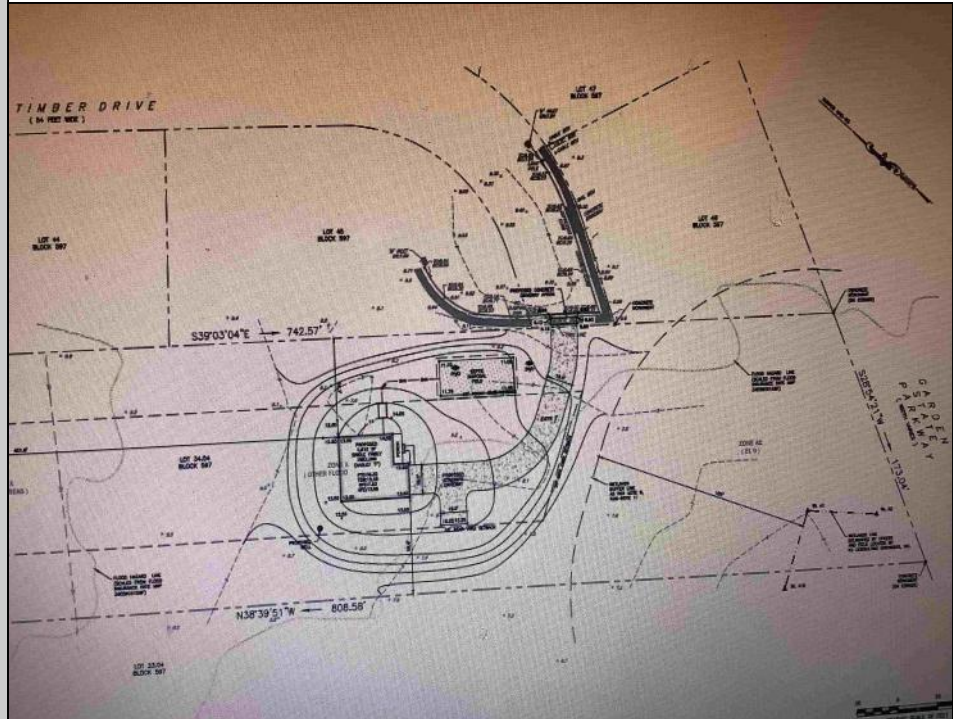


Berger Realty, Inc.
3160 Asbury Avenue
Ocean City, NJ 08226
1-877-237-4371 / 609-399-0076
info@bergerrealty.com



24 Timber
Palermo, NJ 08230

Asking \$269,900.00



COMMENTS

Secluded Buildable wooded lot on a cul de sac off by itself but close to everything. 2.81 Acres part of a 4 lot sub division. Buyer is responsible for all permits, perk tests and engineer to be able to construct a single family home.

PROPERTY DETAILS



Ask for Ben Duncan
Berger Realty Inc
3160 Asbury Avenue, Ocean City
Call: 609-399-0076
Email to: bmd@bergerrealty.com

