

# Berger Realty

Since 1928



Berger Realty, Inc.  
3160 Asbury Avenue  
Ocean City, NJ 08226  
1-877-237-4371 / 609-399-0076  
info@bergerrealty.com



**South Holly**  
**Galloway Township, NJ 08205**

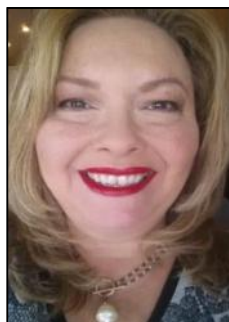
**Asking \$310,000.00**



#### COMMENTS

Wonderful oversized building lot on the corner of South Holly and Coolidge Avenue. A desirable location with 141 front footage, curbs and paved streets. This is the last wooded building parcel in a well established development of newer single family homes. Build your dream home on a generous .57 Acres. Two lot Subdivision opportunity, buyer/builder to complete. Water/sewer and utilities available. Please contact agent for details. Minutes from Atlantic City, Casinos and Shopping, Brigantine, and Ventor beaches. Blocks away from Atlantic medical mainland center. Close to all Major Routes, Jimmie Leeds Road and New Jersey Garden State Parkway.

#### PROPERTY DETAILS



Ask for Theresa Maina  
Berger Realty Inc  
3160 Asbury Avenue, Ocean City  
Call: 609-399-0076  
Email to: tam@bergerrealty.com

