

Berger Realty

Since 1928



Berger Realty, Inc.
3160 Asbury Avenue
Ocean City, NJ 08226
1-877-237-4371 / 609-399-0076
info@bergerrealty.com



South Holly
Galloway Township, NJ 08205

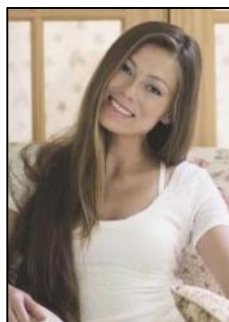
Asking \$310,000.00



COMMENTS

Wonderful oversized building lot on the corner of South Holly and Coolidge Avenue. A desirable location with 141 front footage, curbs and paved streets. This is the last wooded building parcel in a well established development of newer single family homes. Build your dream home on a generous .57 Acres. Two lot Subdivision opportunity, buyer/builder to complete. Water/sewer and utilities available. Please contact agent for details. Minutes from Atlantic City, Casinos and Shopping. Brigantine, and Ventor beaches. Blocks away from Atlantic medical mainland center. Close to all Major Routes, Jimmie Leeds Road and New Jersey Garden State Parkway.

PROPERTY DETAILS



Ask for Margarita Kobilianets
Berger Realty Inc
3160 Asbury Avenue, Ocean City
Call: 609-399-0076
Email to: mak@bergerrealty.com

